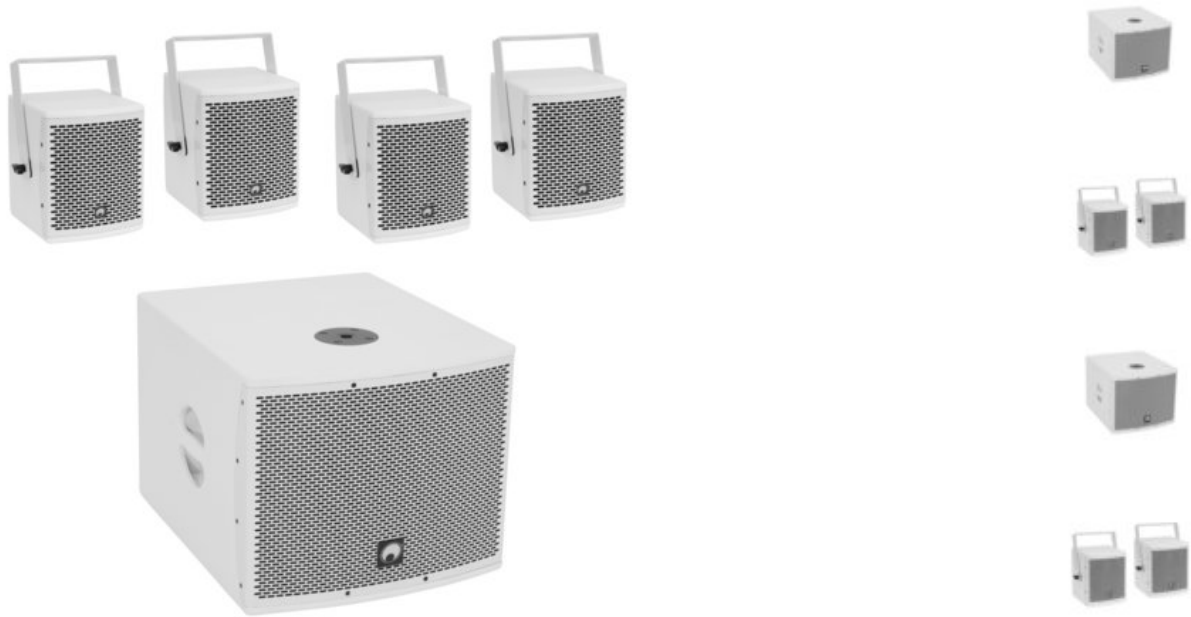


OMNITRONIC Set MOLLY-12A Subwoofer active + 4x MOLLY-6 Top 8 ohms, white 0000758

GTIN: 4026397684391



List price: 1129.31 €

incl. 19% VAT.

Features:

OMNITRONIC MOLLY-12A Subwoofer active white

Active 12" subwoofer with DSP and Bluetooth

- 12" bassreflex subwoofer with DSP and 700 watts RMS power
- Flexibly extendable with MOLLY-6 satellites for 2.1 and 4.1 configurations
- DSP-controlled class D amplifier (500 W + 2 x 100 W)
- Separate volume control for subwoofer and satellites
- Stereo/mono selection
- Digital signal processor
- Control via Bluetooth
- For application areas such as: Mobile djs / entertainer; Trade fair and shop fitting; installation; home entertainment; restaurants, bars and hotels; product presentations and lectures
- White metal grille with acoustic foam
- 2 Rugged carrying handles
- DSP presets: FLAT; DJ; LIVE; VOICE

Package contents

- 1 x bass, 1 x power cord, 2 x speaker cable, 1 x user manual, 1 x declaration of conformity

Logistic

EAN / GTIN: 4026397684391

Weight: 45,00 kg

Length: 1.20 m

Width: 0.60 m

Height: 0.60 m

Bulky product

OMNITRONIC MOLLY-6 Top white 2x

6.5" satellite speakers with bracket

- 8-ohm speaker pair with 6.5" woofer and 1" tweeter
- For use with MOLLY-12A subwoofers for 2.1 and 4.1 configurations
- Optional stand adaptor required for stand mounting
- Extension U-bracket and cable available for connecting 2 satellite speakers
- With mounting bracket

- With rigging points
- White metal grille with acoustic foam
- 2 pieces per set
- For application areas such as: Mobile djs / entertainer; Trade fair and shop fitting; installation; home entertainment; restaurants, bars and hotels; product presentations and lectures

Package contents

- 2 x top, 2 x mounting bracket, 4 x knurled screw, 2 x screw plug-in terminal

Technical specifications:

Weight: 39,90 kg

OMNITRONIC MOLLY-12A Subwoofer active white

Power supply:	230 V AC, 50 Hz
Power consumption:	1000 W
Protection class:	Protection class I
Output power:	1 x 500 W RMS 2 x 100 W RMS (8 ohms) 2 x 200 W RMS (4 ohms)
Power connection:	Mains input via IEC connector (M) mounting version power supply cord with safety plug (provided)
Device fuse:	5 x 20 mm, T 5 A fuse replaceable
Frequency range:	40 - 160 Hz
Sensitivity:	103 dB
Max. SPL:	128 dB
DSP:	Digital signal processor
DSP presets:	FLAT; DJ; LIVE; VOICE
Control:	Bluetooth
Attachment system:	Flange: M20 thread
Circuitry:	Class D
Control elements:	Phase reversal switch
Controls:	Limiter
Status LED:	Signal, power, limit, fault, DSP presets
Connections:	Input: line via 2 x 3-pin XLR/6.35mm jack (F) combination socket (mounting version) Input: line via 1 x 3.5 mm jack (stereo) mounting version Input: line via 1 x stereo RCA Output: line via 2 x 3-pin XLR Output: top via 2 x speaker built-in socket (F)
Input channels:	1 x stereo via combination socket or RCA or Bluetooth, channel control via rotary dial
Speaker:	1 x woofer 12" Voice coil lows 3"
Type of speaker:	Subwoofer
Type of construction:	Vented

Carrying handle:	2 pc/pcs
Material:	Birch multiplex
Color:	White, textured coating, painted
Dimensions:	Width: 47 cm Depth: 57 cm Height: 40 cm
Weight:	22,10 kg
Speaker cable	
Cable length:	3 m

OMNITRONIC MOLLY-6 Top white 2x

Power:	Program: 260W Rated: 130W RMS
Frequency range:	150 - 20000 Hz
Sensitivity:	95 dB (1W/1m)
Max. SPL:	119 dB
Impedance:	8 ohms
Attachment system:	2x mounting bracket
Flying points:	2 x M8 thread
Connections:	1 x speaker built-in socket (F) 1 x screw plug-in terminal
Speaker:	1 x woofer 6,5" Basket material: steel Voice coil lows 1" 1 x tweeter 1"
Type of speaker:	On ceiling/on wall speaker; coaxial speaker
Material:	MDF (medium density fiberboard)
Color:	White, textured coating, painted
Dimensions:	Width: 18,3 cm Depth: 21,4 cm Height: 23 cm
Weight:	8,90 kg